

TRANSITION ALTITUDE 9000 ft

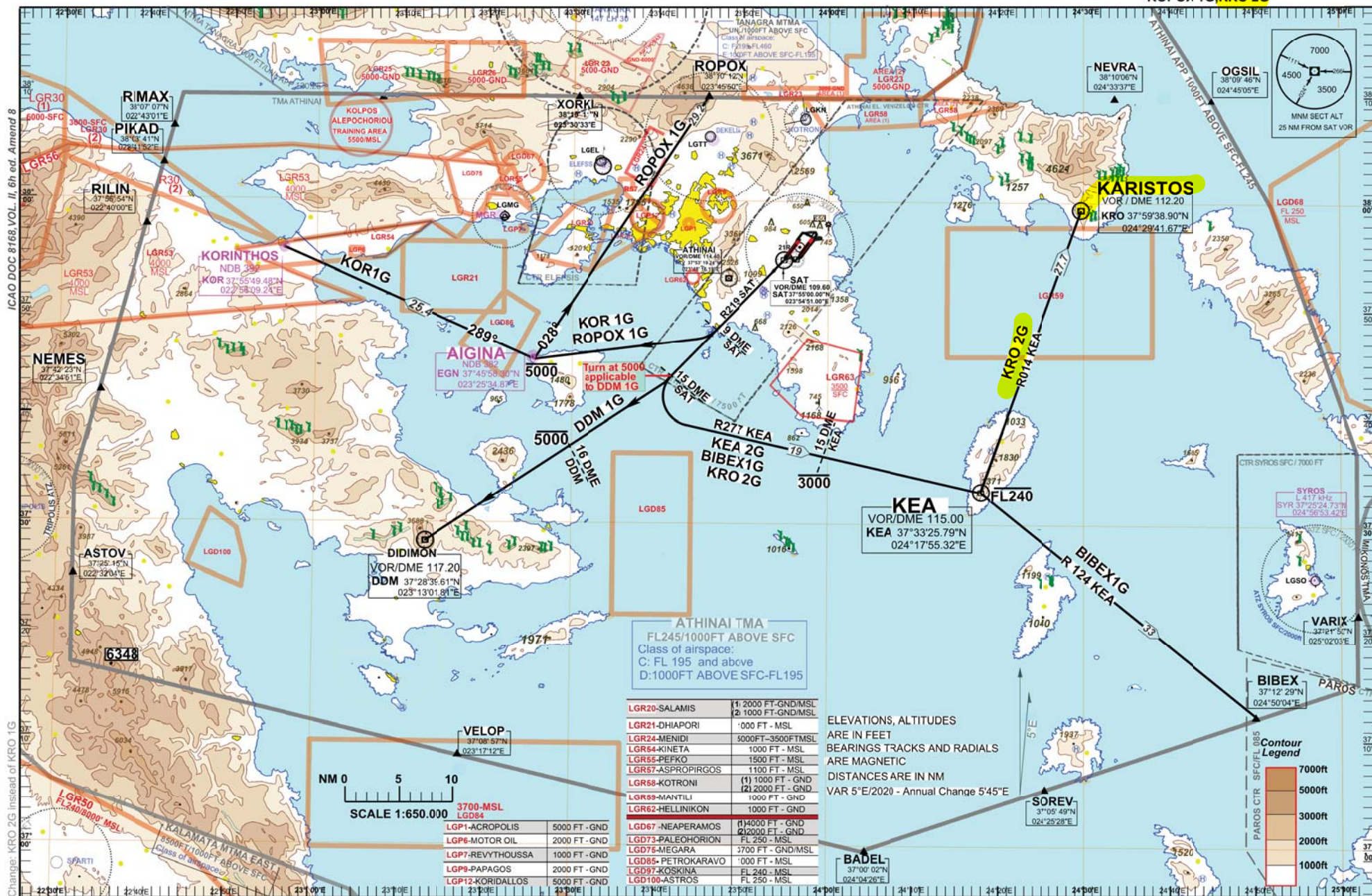
ATIS 136.125

ATHINAI DEPARTURE 128.950
TOWER WEST 136.275
TOWER EAST 118.625

ARRIVAL WEST 132.975
ARRIVAL EAST 126.575

AD 2-LGAV-SID-9
ATHINAI/ELEFTHERIOS VENIZELOS
RWY 21R (BASED ON SAT VOR)

BIBEX 1G, KEA 2G, KOR 1G, DDM 1G
ROPOX 1G, **KRO 2G**



**ATHINAI / ELEFThERIOS VENIZELOS
SAT VOR/DME RWY 21R****SIDs : ROPOX1G, DDM 1G, KOR1G, KEA 2G, BIBEX 1G,KRO 2G****GENERAL:**

Level restrictions are applied in case of radar failure (RCF) and if not otherwise instructed by ATC, in order to secure vertical separation when flying on these SIDs and on specifically related SIDs from parallel RWY 21L.

DESIGNATOR	DESCRIPTION	MAXIMUM IAS / MINIMUM BANK ANGLE	PROCEDURE DESIGN GRADIENT	LEVEL RESTRICTIONS
BIBEX 1G (This SID should be used for destination PAROS AIRPORT)	Climb on runway axis 212°. At SAT or 700ft, whichever is later, intercept RDL 219 SAT. At 15 DME SAT turn left, intercept RDL 277 KEA inbound to KEA. After KEA intercept RDL 124 KEA inbound to BIBEX.	210kt for initial turn / 15°	5% (304 ft/NM)	Cross 15DME inbound to KEA not above 3000ft. Cross KEA at or below FL240.
KEA 2G	Climb on runway axis 212°. At SAT or 700ft, whichever is later, intercept RDL 219 SAT. At 15 DME SAT turn left, intercept RDL 277 KEA inbound to KEA.	210kt for initial turn / 15°	5% (304 ft/NM)	Cross 15DME inbound to KEA not above 3000ft. Cross KEA at or below FL240.
KRO 2G	Climb on runway axis 212°. At SAT or 700ft, whichever is later, intercept RDL 219 SAT. At 15 DME SAT turn left, intercept RDL 277 KEA inbound to KEA. After KEA intercept RDL 014 KEA inbound to KRO.	210kt for initial turn / 15°	5% (304 ft/NM)	Cross 15DME inbound to KEA not above 3000ft. Cross KEA at or below FL240.
DDM 1G	Climb on runway axis 212°. At SAT or 700ft, whichever is later, intercept RDL 219 SAT. At 5000ft turn right inbound to DDM.	210kt for initial turn / 15°	5% (304 ft/NM)	Cross 16 DME inbound to DDM at or below 5000ft.
KOR 1G	Climb on runway axis 212°. At SAT or 700ft, whichever is later, intercept RDL 219 SAT. At 9 DME SAT turn right inbound to EGN. At EGN turn right and follow BRG 289 inbound to KOR.	210kt for initial turn / 15°	5% (304 ft/NM)	Cross EGN at or below 5000ft.
ROPOX 1G	Climb on runway axis 212°. At SAT or 700ft, whichever is later, intercept RDL 219 SAT. At 9 DME SAT turn right inbound to EGN. At EGN turn right and follow BRG 028 inbound to ROPOX.	210kt for initial turn / 15°	5% (304 ft/NM)	Cross EGN at or below 5000ft.